



# TORNATECH

**Project:** \_\_\_\_\_

**Customer:** \_\_\_\_\_

**Engineer:** \_\_\_\_\_

**Pump Manufacturer:** \_\_\_\_\_

**Technical Data  
Submittal Document**

## **Model JPLT**

**Across the Line Start  
Jockey Pump Controller**

**Contents:**

Data Sheets

Dimensional Data

Wiring Schematics

Field Connections

**Note: The drawings included in this package are for controllers covered under our standard offering. Actual AS BUILT drawings may differ from what is shown in this package.**

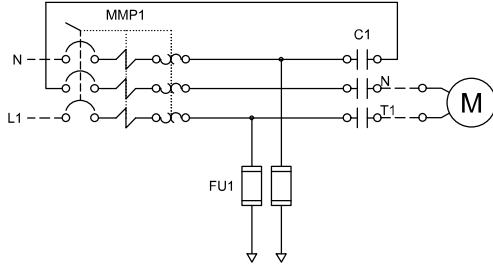
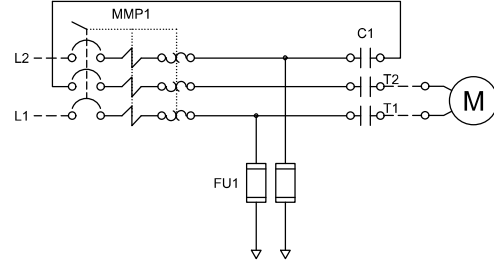
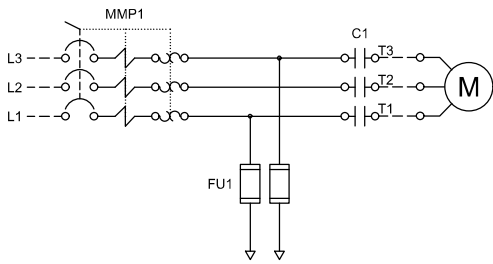


**N.Y.C.  
APPROVED**



February 2026

### Select Incoming Voltage

 **110-120V/1Phase**

 **200-240V/1Phase**

 **200-600V/3Phase**


N.Y.C.  
APPROVED





**Select voltage and power rating**

Voltage	Select Voltage	HP	Select HP
120V/1ph/60Hz <sup>1</sup>	<input type="checkbox"/>	0.25	<input type="checkbox"/>
200V/1ph/60Hz <sup>2</sup>	<input type="checkbox"/>	0.33	<input type="checkbox"/>
208V/1ph/60Hz <sup>2</sup>	<input type="checkbox"/>	0.5	<input type="checkbox"/>
220V/1ph/50-60Hz <sup>2</sup>	<input type="checkbox"/>	0.75	<input type="checkbox"/>
230V/1ph/50-60Hz <sup>2</sup>	<input type="checkbox"/>	1	<input type="checkbox"/>
240V/1ph/50-60Hz <sup>2</sup>	<input type="checkbox"/>	1.5	<input type="checkbox"/>
200V/3ph/50-60Hz <sup>3</sup>	<input type="checkbox"/>	2	<input type="checkbox"/>
208V/3ph/50-60Hz <sup>3</sup>	<input type="checkbox"/>	3	<input type="checkbox"/>
220V/3ph/50-60Hz <sup>4</sup>	<input type="checkbox"/>	4	<input type="checkbox"/>
230V/3ph/50-60Hz <sup>4</sup>	<input type="checkbox"/>	5	<input type="checkbox"/>
240V/3ph/50-60Hz <sup>4</sup>	<input type="checkbox"/>	7.5	<input type="checkbox"/>
380V/3ph/50-60Hz <sup>5</sup>	<input type="checkbox"/>	10	<input type="checkbox"/>
400V/3ph/50-60Hz <sup>5</sup>	<input type="checkbox"/>	15	<input type="checkbox"/>
415V/3ph/50-60Hz <sup>5</sup>	<input type="checkbox"/>	20	<input type="checkbox"/>
440V/3ph/60Hz <sup>6</sup>	<input type="checkbox"/>	25	<input type="checkbox"/>
460V/3ph/60Hz <sup>6</sup>	<input type="checkbox"/>		
480V/3ph/60Hz <sup>6</sup>	<input type="checkbox"/>		
575V/3ph/60Hz <sup>7</sup>	<input type="checkbox"/>		
600V/3ph/60Hz <sup>7</sup>	<input type="checkbox"/>		

- Notes: <sup>1</sup> Maximum power rating is 5HP.  
<sup>2</sup> Maximum power rating is 10HP.  
<sup>3</sup> Maximum power rating is 7.5HP.  
<sup>4</sup> Maximum power rating is 10HP.  
<sup>5</sup> Maximum power rating is 15HP.  
<sup>6</sup> Maximum power rating is 20HP.  
<sup>7</sup> Maximum power rating is 25HP.

<b>Listing</b>	Underwriters Laboratory (UL)	UL508A - Industrial Pump Controllers
	New York City	Accepted for use in the City of New York by the Department of Buildings
	<b>Optional</b>	
	<input type="checkbox"/> CE Mark	Various EN, IEC & CEE directives and standards
<b>Enclosure</b>	<b>Protection Rating</b>	
	<input type="checkbox"/> Standard: NEMA 2	
	<b>Optional</b>	
	<input type="checkbox"/> NEMA 12	<input type="checkbox"/> NEMA 4X-304 sst painted
	<input type="checkbox"/> NEMA 3	<input type="checkbox"/> NEMA 4X-304 sst brushed finish
<input type="checkbox"/> NEMA 3R	<input type="checkbox"/> NEMA 4X-316 sst painted	
<input type="checkbox"/> NEMA 4	<input type="checkbox"/> NEMA 4X-316 sst brushed finish	
	<b>Accessories</b> • Wall mounting lugs ( x4)	<b>Paint Specifications</b> • Red RAL3002 • Powder coating • Glossy textured finish



### Short circuit current rating

HP	Voltage						
	Single Phase		Three Phase				
	110 - 120V	200 - 240V	200 - 208V	220 - 240V	380 - 415V	440 - 480V	600V
<b>0.25</b>	65kA	65kA	65kA	65kA	65kA	65kA	10kA
<b>0.5</b>	65kA	65kA	65kA	65kA	65kA	65kA	10kA
<b>0.75</b>	42kA	65kA	65kA	65kA	65kA	65kA	10kA
<b>1</b>	42kA	65kA	65kA	65kA	65kA	65kA	10kA
<b>1.5</b>	42kA	65kA	65kA	65kA	65kA	65kA	10kA
<b>2</b>	42kA	65kA	65kA	65kA	65kA	65kA	10kA
<b>3</b>	CF	42kA	65kA	65kA	65kA	65kA	10kA
<b>4</b>	CF	42kA	42kA	42kA	65kA	65kA	10kA
<b>5</b>	CF	42kA	42kA	42kA	65kA	65kA	10kA
<b>5.5</b>	CF	CF	42kA	42kA	65kA	65kA	10kA
<b>7.5</b>	CF	CF	42kA	42kA	42kA	65kA	10kA
<b>10</b>	CF	CF	CF	42kA	42kA	42kA	10kA
<b>15</b>	CF	CF	CF	CF	42kA	42kA	5kA
<b>20</b>	CF	CF	CF	CF	CF	42kA	5kA
<b>25</b>	CF	CF	CF	CF	CF	CF	5kA



<b>Fuseless Motor Starter</b>	<ul style="list-style-type: none"> <li>• Type -F fuse-less magnetic motor starter</li> <li>• Rotary handle, padlockable</li> <li>• Door interlocked</li> </ul>		
<b>Control Circuit</b>	<ul style="list-style-type: none"> <li>• 24V.AC</li> </ul>		
<b>ViZiLT Operator Interface</b>	<ul style="list-style-type: none"> <li>• High luminosity alphanumeric digital display</li> <li>• HAND-OFF-AUTO pushbuttons</li> <li>• MENU navigation pushbuttons</li> </ul>		
<b>Pressure Sensing</b>	<ul style="list-style-type: none"> <li>• Pressure transducer for fresh water application 316 stainless steel construction</li> <li>• Rated for 0-600psi working pressure</li> <li>• Pressure sensing line connection 1/2" brass Male NPT</li> </ul>		
<b>Visual Indications</b>	<ul style="list-style-type: none"> <li>• H-O-A position</li> <li>• System pressure</li> <li>• Cut-out and Cut-In pressure setting</li> <li>• Manual motor run</li> <li>• Automatic motor run</li> <li>• Motor overload (occured)</li> <li>• Pump start counter</li> <li>• Elapsed time meter (hours / non-resettable)</li> </ul>		
<b>Timers</b>	<ul style="list-style-type: none"> <li>• Minimum run timer (off delay)</li> <li>• Delay start timer (on delay)</li> <li>• Visual countdown</li> </ul>		
<b>Counters</b>	<ul style="list-style-type: none"> <li>• Pump start counter</li> <li>• Elapsed timer meter (hours / non-resettable)</li> </ul>		
<b>Operators</b>	<ul style="list-style-type: none"> <li>• Main disconnect handle</li> <li>• HAND-OFF-AUTO pushbuttons</li> <li>• MENU navigation pushbuttons</li> </ul>		
<b>Operation</b>	Automatic Start	Start on pressure drop	
	Manual Start	Start pushbutton	
	Stopping	Stop pushbutton	
	Timers	Field adjustable & visual countdown	<ul style="list-style-type: none"> <li>• Minimum run timer (off delay)</li> <li>• Delay start timer (on delay)</li> </ul>

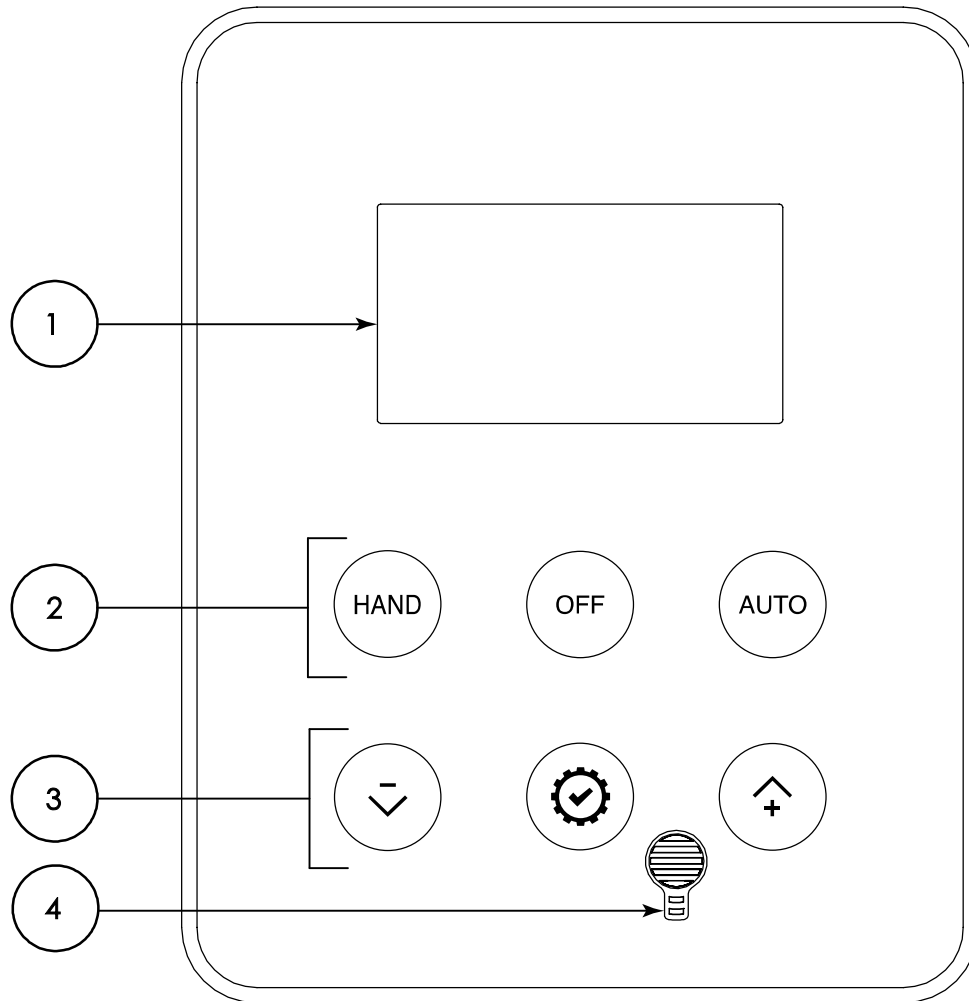


<input type="checkbox"/> A5	Motor run alarm contact
<input type="checkbox"/> A6	Loss of power alarm contact
<input type="checkbox"/> A7	Overload or short circuit alarm contact
<input type="checkbox"/> D11D	Pressure transducer 0-600psi with ½" MNPT 316 stainless steel bushing
<input type="checkbox"/> D13A	Externally mounted wetted parts
<input type="checkbox"/> D18	Audible alarm
<input type="checkbox"/> D19	Anti-condensation heater and thermostat
<input type="checkbox"/> D20	Anti-condensation heater and humidistat
<input type="checkbox"/> D21	Tropicalization
<input type="checkbox"/> D22	Phase reversal / failure pilot light and alarm contact
<input type="checkbox"/> D23	Controller power healthy pilot light and alarm contact
<input type="checkbox"/> D24	Pump failure via current sensing relay with pilot light and dry alarm contact
<input type="checkbox"/> D25	Low zone pump control function
<input type="checkbox"/> D26	Mid zone pump control function
<input type="checkbox"/> D27	High zone pump control function
<input type="checkbox"/> D28	Controller in AUTO alarm contacts
<input type="checkbox"/> D29	Controller not in AUTO alarm contacts
<input type="checkbox"/> D30	Motor heater circuit
<input type="checkbox"/> D35	Seismic Certification compliant to CBC 2019, IBC 2018 rigid base/wall mounted only
<input type="checkbox"/> D36	Special Seismic Certification compliant to OSHPD rigid base/wall mounted only
<input type="checkbox"/> D37	100kA high short circuit withstand rating for 200V to 600V

<input type="checkbox"/> L01	Other language and English (bilingual)
<input type="checkbox"/> L02	French
<input type="checkbox"/> L03	Spanish
<input type="checkbox"/> L04	German
<input type="checkbox"/> L05	Italian
<input type="checkbox"/> L06	Polish
<input type="checkbox"/> L07	Romanian
<input type="checkbox"/> L08	Hungarian
<input type="checkbox"/> L09	Slovakian
<input type="checkbox"/> L10	Croatian
<input type="checkbox"/> L11	Czech
<input type="checkbox"/> L12	Portuguese
<input type="checkbox"/> L13	Dutch
<input type="checkbox"/> L15	Turkish
<input type="checkbox"/> L16	Swedish
<input type="checkbox"/> L21	Danish
<input type="checkbox"/> L28	Finnish
<input type="checkbox"/> L29	Norwegian

Note: Options chosen from this page are not electrically represented on the wiring schematics in this submittal package.

ViZiLT Operator Interface



- 1 - High luminosity alphanumeric digital display
- 2 - HAND-OFF-AUTO pushbuttons
- 3 - MENU navigation pushbuttons
- 4 - Audible Alarm



**TORNATECH**

© Tornatech, Inc. Not for construction.  
Subject to change without notice.

BY	DD/MM/YY
DRAWN BY	ACD
FINAL APPROVAL	FC
	15/05/23

# JOCKEY PUMP CONTROLLER

**MODEL: JPLT**

BUILT TO THE LATEST EDITION OF THE UL 508A

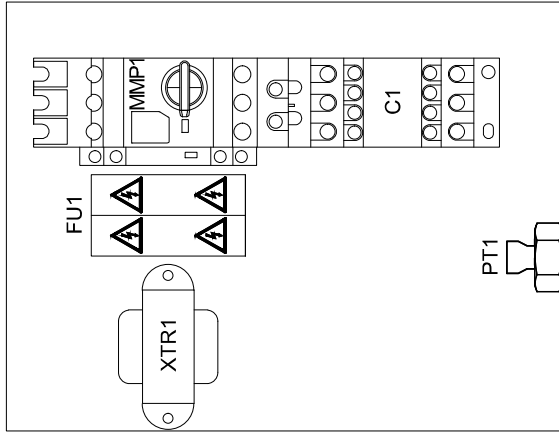
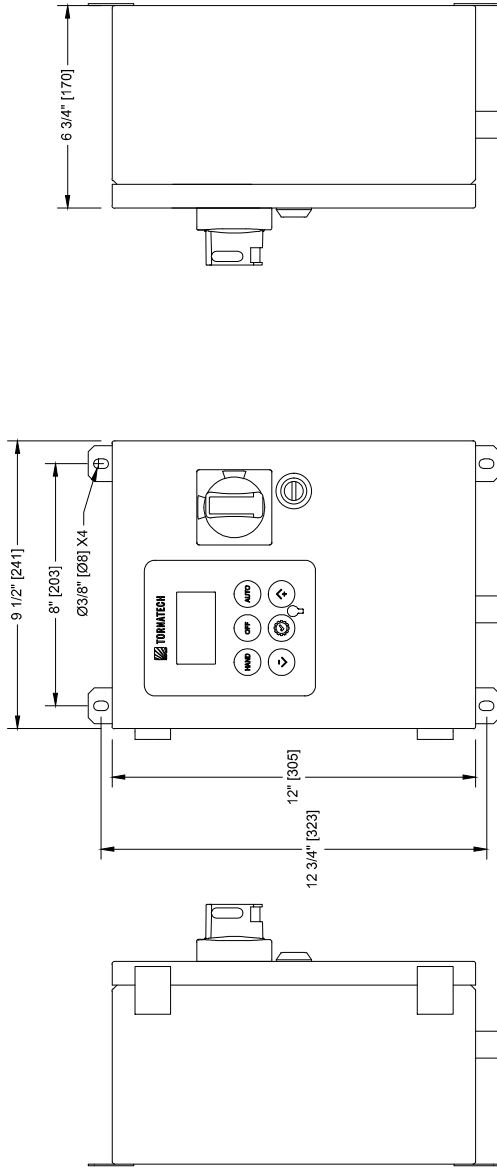


NYS  
Division of  
Consumer  
Protection  
Approved



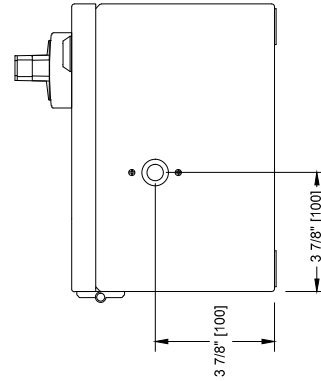
THIRD ANGLE  
PROJECTION

DRAWING NUMBER  
**JPLT-DI001/E**  
DWG REV.0  
SHEET 1 OF 1



Standard Internal Layout

Voltage / Power Table	
Voltage	Max HP
<b>1 Phase</b>	
110 - 120	2
200 - 208	5
220 - 240	5
<b>3 Phases</b>	
200 - 208	7.5
220 - 240	10
380 - 400 - 415	15
440 - 480	20
600	25



### Notes:

- Standard NEMA: NEMA 2
- Standard Paint: Textured Red RAL 3002.
- All Dimensions are in Inches [Millimeters]
- Use Watertight Conduit and Connector Only.
- Protect Equipment Against Drilling Chips.
- Door Swing Equal to Door Width

Drawing for information only.

Manufacturer reserves the right to modify this drawing without notice.  
Contact manufacturer for "As Built" drawing.

\*Dimensions may change depending on option required. Consult Factory for exact dimensions.



**TORNATECH**

© Tornatech, Inc. Not for construction.  
Subject to change without notice.

BY DD/MM/YY

DRAWN BY ACD 15/05/23

FINAL APPROVAL FC 15/05/23

**MODEL: JPLT**

BUILT TO THE LATEST EDITION OF THE UL 508A



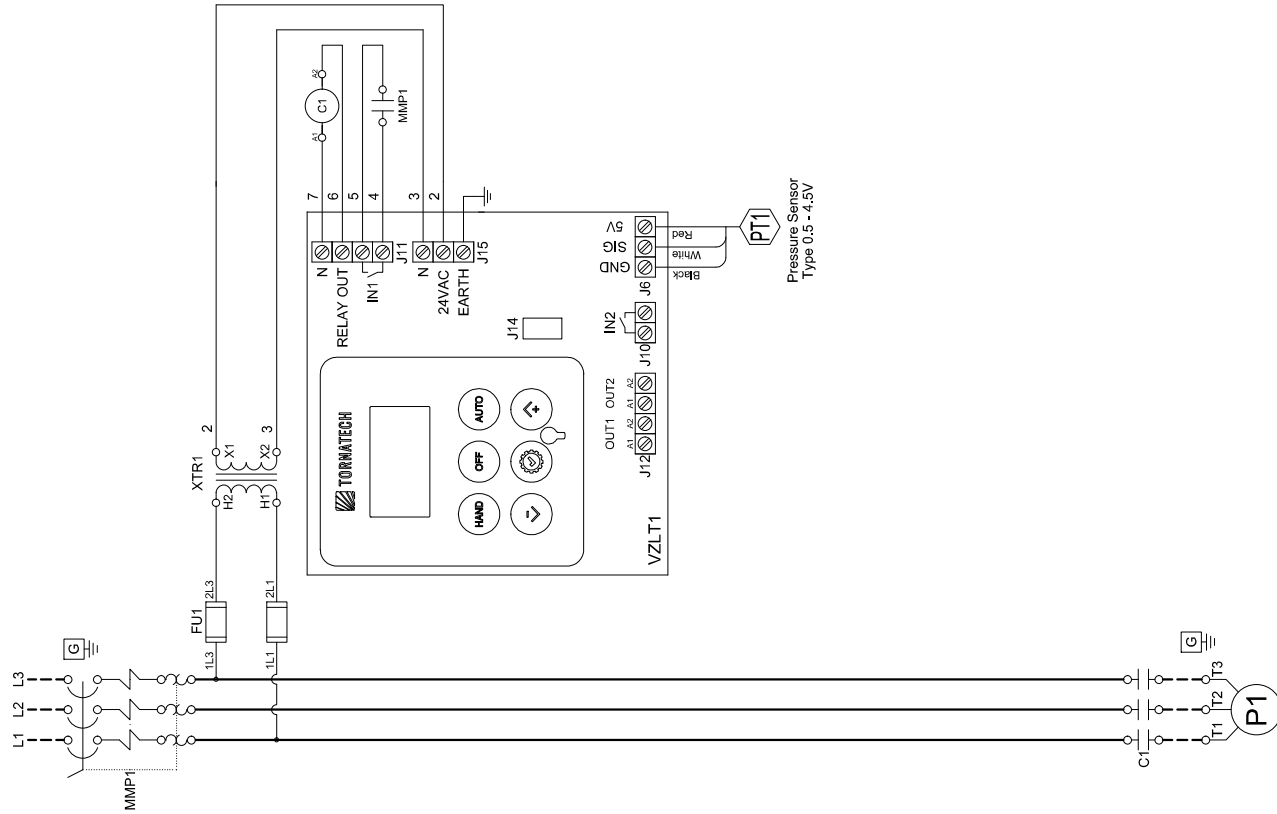
NYC  
Department of  
Approved

DRAWING NUMBER  
**JPLT-WS003 IE**

DWG REV. 1

SHEET 1 OF 1

# JOCKEY PUMP CONTROLLER ACROSS THE LINE / 3 PHASES





© Tornatech, Inc. Not for construction.  
Subject to change without notice.

**TORNATECH**

BY	DD/MM/YY
DRAWN BY	ACD
FINAL APPROVAL	FC
	15/05/23
	15/05/23

## JOCKEY PUMP CONTROLLER ACROSS THE LINE / 3 PHASES

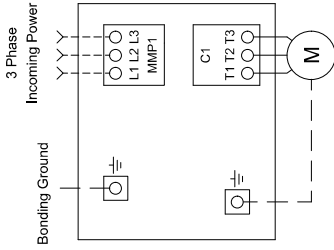
**MODEL: JPLT**

BUILT TO THE LATEST EDITION OF THE UL 508A



DRAWING NUMBER  
**JPLT-TD003/E**  
DWG REV. 0  
SHEET 1 OF 1

### Power Connections and Motor Connections



#### Line Terminals (L1, L2, L3, GND)

Maximum Motor Horsepower		Wire Size Copper Only	Torque	Wire Size Ground Copper Only		
200-208V	220-240V	380-416V	440-480V	575-600V	#14 AWG - #8 AWG	2.5 Nm
7.5HP	10HP	15HP	20HP	25HP		

#### Motor Terminals (T1, T2, T3, GND)

Maximum Motor Horsepower		Wire Size Copper Only	Torque	Wire Size Ground Copper Only		
200-208V	220-240V	380-416V	440-480V	575-600V	#14 AWG - #10 AWG	1.7 Nm
3HP	4HP	5.5HP	7.5HP	10HP		
7.5HP	10HP	15HP	20HP	25HP	#14 AWG - #8 AWG	2.5 Nm